

Get Utility for Windows

Get Utility for Windows allows the user to send text from a PC to an AlphaSmart 3000, an AlphaSmart 2000 or an AlphaSmart Pro version 2.09, or version 2.1.3 or newer (not to version 2.1 or 2.1.2).

The program transfers the current "Text in Clipboard" to an attached AlphaSmart. (The Clipboard is a memory buffer that allows transfer of information between different programs).

Get Utility Communication Options

There are 3 ways to communicate between your AlphaSmart and your PC using the Get Utility:

- 1) Using a USB cable (with the AlphaSmart 3000 only)
- 2) Using the keyboard port with the PC Y cable
- 3) Using an Infrared (IrDA) adapter: AlphaSmart PC IR Wireless Pod (serial) or USB IR Wireless Pod

Note: Some methods of connection are available only with specific versions of the Windows operating system. The compatibility chart below shows the methods that apply to each version:

	Serial Infrared	Keyboard (cable)	USB (cable)	USB Infrared
Windows 3.x		X		
Windows 95	X	X		
Windows 98	X	X	X	X
Windows NT	X	X		
Windows 2000	X	X	X	X
Windows Me		X	X	X

Installing the Get Utility

IMPORTANT: If you are using a USB IR Pod, you must complete the Get Utility Setup before connecting the pod to your PC.

- Insert "Get Utility" CD-ROM disk into drive. Windows should automatically launch the Get Utility Setup.
- If Windows fails to launch the setup, look in the "Get Utility Setup" directory on the CD for Setup.exe and run it. (Note: You may have Windows Explorer set to hide file extensions and so you will only see a number of icons called Setup instead of Setup.exe in the Get Utility Setup directory. When you move your mouse over the file it should display the whole file name in a pop up box.)
- Follow the onscreen instructions in Get Utility Setup.
- If you are using a USB IR Pod, you can connect the pod to your computer once you have installed the Get Utility.

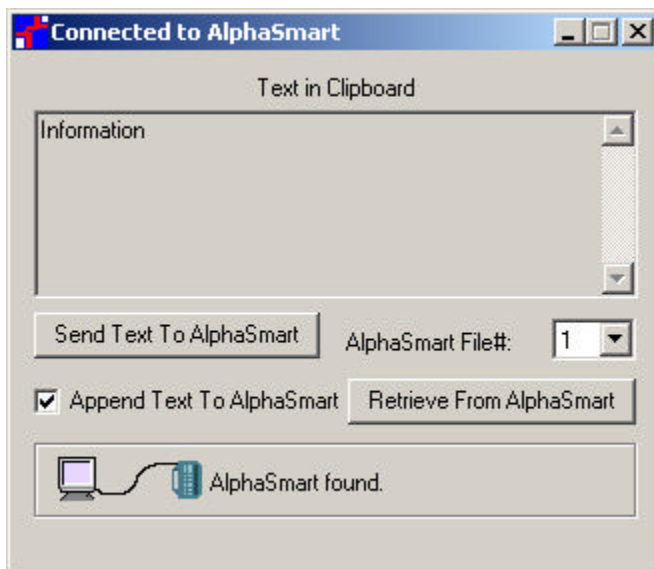
Connecting the AlphaSmart to the PC

- Using a USB cable (AlphaSmart 3000 only): Plug the USB cable (Series A to Series B) into the AlphaSmart 3000 "Computer" connector, and connect the other end of the cable to the USB port on the PC. This port is often located on the back of the PC.

- Using the AlphaSmart PC "Y" cable: Follow the "Installing the PC Y Cable" instructions in your AlphaSmart User's Guide or Owner's Manual.
- Using Infrared (IrDA): For serial port installations, connect the PC IR Wireless Pod to one of the COM ports of the computer. For USB installations, connect the USB IR Wireless Pod to one of the USB ports of the computer. Point the AlphaSmart's Infrared port at the IR Pod.

Sending Text to the AlphaSmart from a PC using a Cable Connection

1. Copy the text into the PC Clipboard. To do this, open the file containing the text you wish to send, select the text using the mouse or cursor keys, and select Copy (Ctrl-C) on the Edit menu.
2. Attach the AlphaSmart to the PC, and launch the Get Utility (double click on its icon). You will see the copied text in the "Text in Clipboard" window.

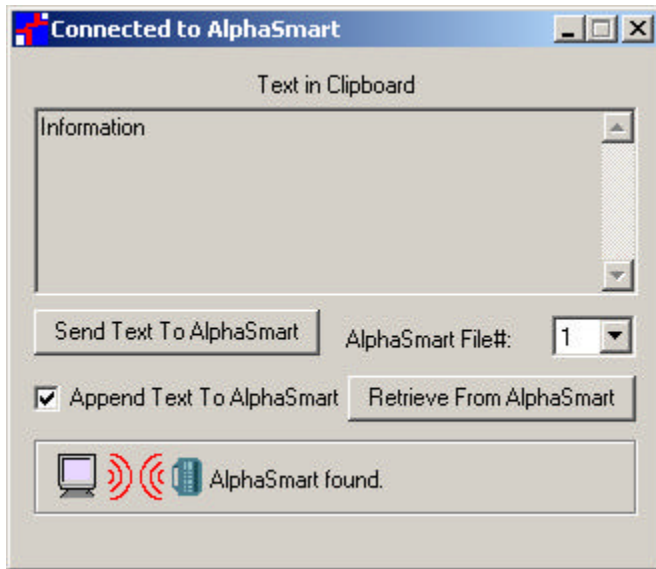


3. Press the **Send Text To AlphaSmart** button to send the text from the PC to the AlphaSmart. The "Text in Clipboard" is sent to the current file on the AlphaSmart. You may change the AlphaSmart file by selecting a file on the file pop-up menu.
4. You may now disconnect your AlphaSmart.

To download to other AlphaSmarts, it is not necessary to quit Get Utility and relaunch it.

Sending Text to the AlphaSmart from a PC Using Infrared

1. Copy the text into the PC Clipboard. To do this, open the file containing the text you wish to send, select the text using the mouse or cursor keys, and select Copy (Ctrl-C) on the Edit menu.
2. Launch the Get Utility (double click on its icon). You will see the copied text in the "Text in Clipboard" window. At this point the Get Utility will begin scanning for an infrared-equipped AlphaSmart.



3. Align the AlphaSmart's infrared port lens with the lens of the computer's IR Pod or built-in IR device and press the Send button. (Even though you are not sending text from the AlphaSmart, this step is necessary to open the IR connection.) The AlphaSmart will display messages indicating that it is connecting to the PC. After a few seconds, the Get Utility will show that an AlphaSmart has been found.
4. From the pop-up menu, select the destination file on the AlphaSmart for the text. Press the "Send Text To AlphaSmart" button to transfer the text from the PC to the AlphaSmart. You may now disconnect your AlphaSmart by either pressing the esc key on the AlphaSmart, or simply moving it away from the PC.

To download to other AlphaSmarts, it is not necessary to quit Get Utility and relaunch it; just return to Step 3.

Get Utility Controls

Send text to AlphaSmart: This button initiates the sending of data to the AlphaSmart.

Retrieve from AlphaSmart: This button initiates the sending of data from the AlphaSmart to the PC.

AlphaSmart file #: This pop-up menu allows the user to change the current file on the AlphaSmart.

Append Text to the End of the File: This button allows you to add the text from the "Text in Clipboard" window to the end of your AlphaSmart file.

Note: The append checkbox is not available in the Get Utility for Windows 3.x. The figure below shows the interface for Windows 3.x.

